

Panasonic
ideas for life



Home Network Cameras

Wired Type **BL-C101**

Wireless Type **BL-C121**
Indoor Use Only



* This logo mark is issued by the IPv6 Ready Logo Program Committee, an IPv6 promotion group established mainly by the IPv6 Forum.

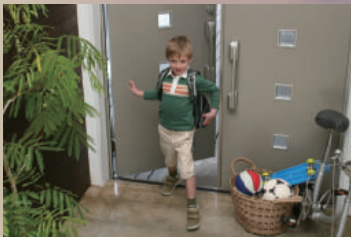
Keep an Eye on the House from Anywhere even over the Cell phone!

Do you sometimes worry about things at home while you're at work or on vacation? Panasonic network cameras let you monitor your room over the Internet from wherever you are. They even notify you by e-mail when they detect moving objects. And you can choose the video format to match the Internet connection and your viewing needs. Let Panasonic network cameras keep an eye on things - anytime, anywhere - so you can relax and enjoy yourself.



BL-C121

Monitoring various locations



Entrance



Kid's room



Pet activity

See There
When You Can't Be There™

System Diagram

Panasonic network cameras support UPnP and DDNS, so it's easy to set up the network and access cameras over the Internet with an ID and password.



Feel Safer with Panasonic

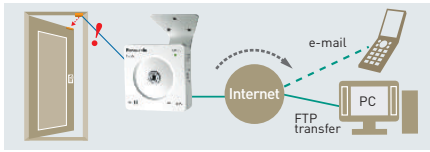


Installation

External I/O

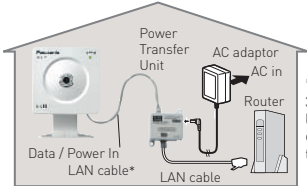
The external I/O is connectable to various sensors and switches, which can be interlocked with the cameras.

(Note: For BL-C101 only input connector is available).



Power Supply via LAN cable (BL-C101)

The included Power Transfer Unit supplies the camera the power through the LAN cable. It allows you to install the camera anywhere, like on the ceiling where no power outlet is.



*Use LAN cable of length 30m [98 feet 5 inches] or less to connect the camera and the power transfer unit.

Wireless Communication (BL-C121)

Install the camera anywhere*1 with no transmission cables to connect, and enjoy high-speed communications at 2.4 GHz, 54 Mbps*2 (IEEE 802.11g) or 2.4 GHz, 11 Mbps*2 (IEEE 802.11b).

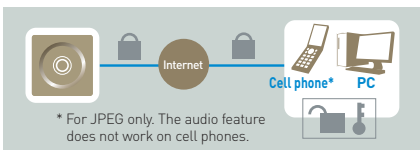
*1 Cannot be used in bathrooms or outdoors.

*2 The indicated speed is the maximum theoretical value of the wireless LAN specification, and does not denote the actual data transfer speed achieved by the cameras.

Connect

SSL support

Image/voice data is sent in encrypted form, making it very difficult for someone else to "eavesdrop" on the network.

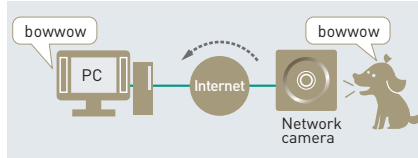
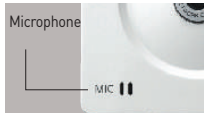


* For JPEG only. The audio feature does not work on cell phones.

Control

Built-in Microphone

Sounds picked up by the built-in microphone can be heard through the PC. Video monitoring with sound enhances security by providing additional information that images cannot convey.



Capture

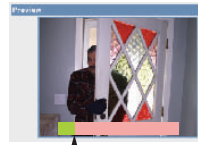
Motion Detection Function

This function detects changes by reacting to a camera threshold or sensitivity that is set in advance on the PC. Captured images can also be stored temporarily in the camera*3 or sent to you by e-mail*4 or FTP data transfer*5.

*3 A maximum of approximately 250 images (320 x 240 pixels) can be stored in the camera.

*4 POP before SMTP authentication and SMTP authentication (PLAIN, LOGIN and CRAM-MD5) are supported.

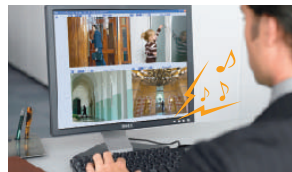
*5 The sensor's detection history can also be e-mailed to you once a day at a preset time.



Threshold

Detection Notification Sound

While viewing MJPEG images on the single or multi-camera screens, your computer can play a sound to notify you when motion is detected or the external sensor is triggered. This feature can be set independently on each computer that accesses the camera.



Monitor

Simultaneous MPEG-4*6 and JPEG

Cameras simultaneously send MPEG-4*6 images and JPEG images. MPEG-4 is recommended for viewing smooth motion images, and JPEG is recommended for recording higher quality images.

*6 MPEG-4 is not applicable on a cell phone.

MPEG-4 Visual License

When installing the MPEG-4 viewer program on additional PCs, please purchase additional licenses. [Model No. BB-HCA5A for USA, BB-HCA5CE for others]

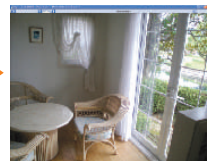
Full Screen Display

The monitoring image is easier to see because it fills the entire screen.

Normal mode



Full screen mode



Multi-camera capability

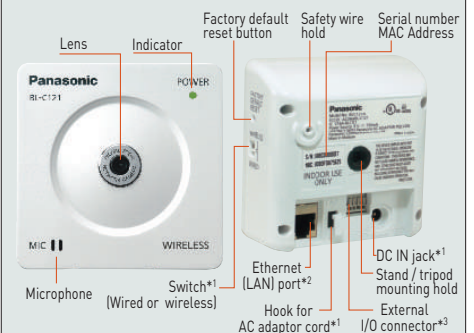


Cell Phone Monitoring



*Up to 16 windows can be viewed at once

Part Names (The picture is BL-C121.)



*1 Available only for BL-C121.

*2 For BL-C101 power is also supplied via LAN cable.

*3 For BL-C101 only input connector is available.

Specifications [BL-C101 / 121]

	BL-C121	BL-C101
Camera		
Zoom	10x digital zoom (by area)	
Viewing angle	58° horizontal, 45° vertical	
Sensor Type	1/4 inch CMOS sensor, approx. 320,000 pixels	
Focus	Fixed (focal range: 0.3 m to ∞)	
Aperture (F No.)	F2.8	
Required light intensity	5 to 10,000 lx (3 to 10,000 lx in color night view mode)	
Scanning system	Progressive scan	
Audio		
Audio communication	One-way communication	
Audio compression	ADPCM 32 kbps	
Audio bandwidth	300 Hz - 3,400 Hz	
Audio input	Built-in microphone	
Audio output	N/A	
Terminal		
Network interface	Ethernet (10Base-T / 100Base-TX)	
External I/O connector	Input: 1 Output: 1	Input: 1

	BL-C121	BL-C101
Server		
Image compression	JPEG (Motion JPEG for moving image display), MPEG-4	
Video resolution	640 x 480, 320 x 240 (default), 192 x 144	
Image quality	JPEG (favor clarity, standard, favor motion), MPEG-4	
Frame rate*1	Max. 30 frames/sec*2 (AC Power source Frequency is 60 Hz) Max. 25 frames/sec*2 (AC Power source Frequency is 50 Hz)	
Security	User ID / Password, SSL	
Supported protocols	IPv4/IPv6 Dual-Stack IPv4: TCP, UDP, IP, HTTP, FTP, SMTP, DHCP, DNS, ARP, ICMP, POP3, NTP, UPnP, SMTP Authentication, RTP, RTSP*3, RTCP, HTTPS, SSL, TLS IPv6: TCP, UDP, IP, HTTP, FTP, SMTP, DNS, ICMPv6, POP3, NDP, NTP, RTP, RTSP*3, RTCP, HTTPS, SSL, TLS	
User access limit	HTTP: Max. 30 simultaneous accesses (max. 10 accesses in MPEG-4 mode) HTTPS: Max. 10 simultaneous accesses (max. 5 accesses in MPEG-4 mode)	
Buffered Images*4	Approx. 250 images (320 x 240) -Standard image quality -with time display	
Image transfer method	SMTP*5, FTP, HTTP	
Image buffer/transfer triggers	Alarm, Timer or Motion Detection	

	BL-C121	BL-C101
Wireless		
Standard	IEEE 802.11b, 802.11g, 802.11g exclusive	-
Antenna	Diversity	-
Number of channel	BL-C121A: 11ch (1-11) BL-C121CE/E: 13ch (1-13)	-
Transmission speed	Up to 54 Mbps	-
Security	SSID, WEP (64/128/152 bit), WPA-PSK (TKIP), WPA2-PSK (AES)	-
General		
Operating Temperature	+5°C to +40°C (+41°F to +104°F)	
Operating humidity	20% to 80% (No condensation)	
Dimensions (H x W x D)	85 x 85 x 35.5 mm (3 3/8 x 3 3/8 x 1 3/8 inch) 140 g (0.31 lb.)	85 x 85 x 27 mm (3 3/8 x 3 3/8 x 1 1/16 inch) 100 g (0.22 lb.)
Weight (only the unit)		
Power supply	AC adaptor: input 100 - 240 V AC, 50/60 Hz Output 9V DC, 750 mA	
Power supply via Power Transfer Unit	N/A	Yes (proprietary PoE)
Maximum Power Consumption	6.8 W (During wireless communication)	2.8 W

*1: The frame rate may slow down depending on the network environment, PC performance, image quality, when viewing dark images, etc.

*2: Not applicable to 640 x 480 JPEG.

*3: Only still images in JPEG format can be displayed on a mobile phone.

*4: The maximum number of images that can be buffered depends on image resolution and image quality.

For information about MPEG-4 image capacity, see the Panasonic Network Camera website at <http://panasonic.net/pcc/support/netwcam/support/info.html>.

*5: POP Before SMTP Authentication and SMTP authentication (PLAIN, LOGIN, and CRAM-MD5) are supported.

Panasonic®

BL-C10121-LT(0901)
All pictures simulated.
Design and specifications are subject to change without notice.